



512 SETL 50 Ludgate Hill, Birmingham, B3 1FJ

£1,200 Per month



512 SETL 50 Ludgate Hill, Birmingham, B3 1FJ

£1,200 Per month

New to the market, this beautifully presented one double bedroom apartment is on the fifth floor of the sought after SETL development.

This impressive property benefits from a large open plan living area with wooden flooring and high ceiling plus large windows allowing plenty of natural light, a stylish dark grey fully integrated kitchen with separate large utility cupboard, large double bedroom and triple fitted wardrobe plus large windows, luxury bathroom with bath and shower, two further storage cupboards, secure video entry system and neutral decoration throughout.

Residents have full access to the co-working lounge, with superfast broadband, coffee on tap, and a choice of seating makes this the perfect place to work from home. Also onsite is a fitness studio, perfect for yoga sessions and PT workouts and a beautiful rooftop garden offering views right across the city with lush planting and all weather seating,

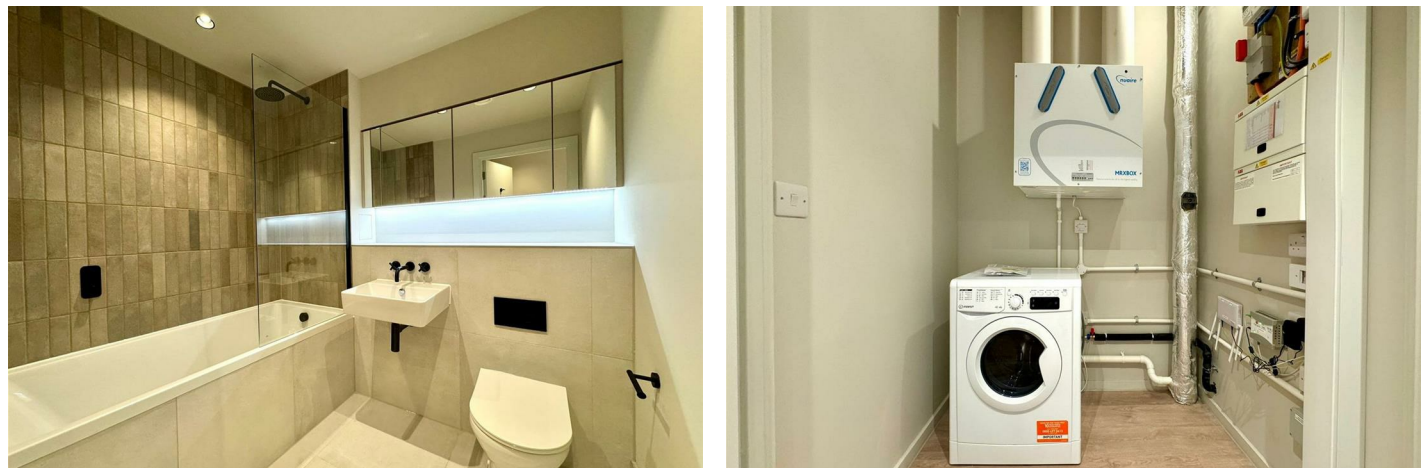
SETL is located in a prime Jewellery Quarter location, just in front of the BT tower, below the popular St Pauls Square, with its numerous bars and restaurants. Birmingham city centre and New Street railway station are just a few minutes walk away.

* Sorry, no allocated parking with this property *

Description



Situation



Furnished

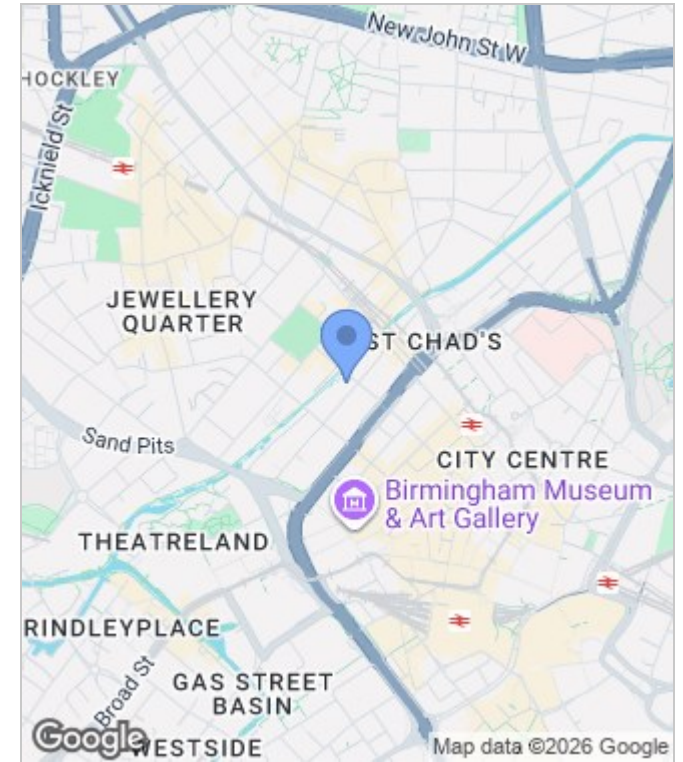
Council Tax Band: C

Available: 10th August 2026

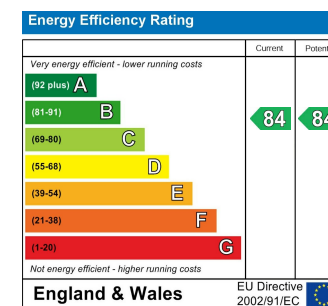
Floor Plans



Area Map



Energy Performance Graph



These particulars, whilst believed to be accurate are set out as a general outline only for guidance and do not constitute any part of an offer or contract. Intending purchasers should not rely on them as statements of representation of fact, but must satisfy themselves by inspection or otherwise as to their accuracy. No person in this firm's employment has the authority to make or give any representation or warranty in respect of the property.